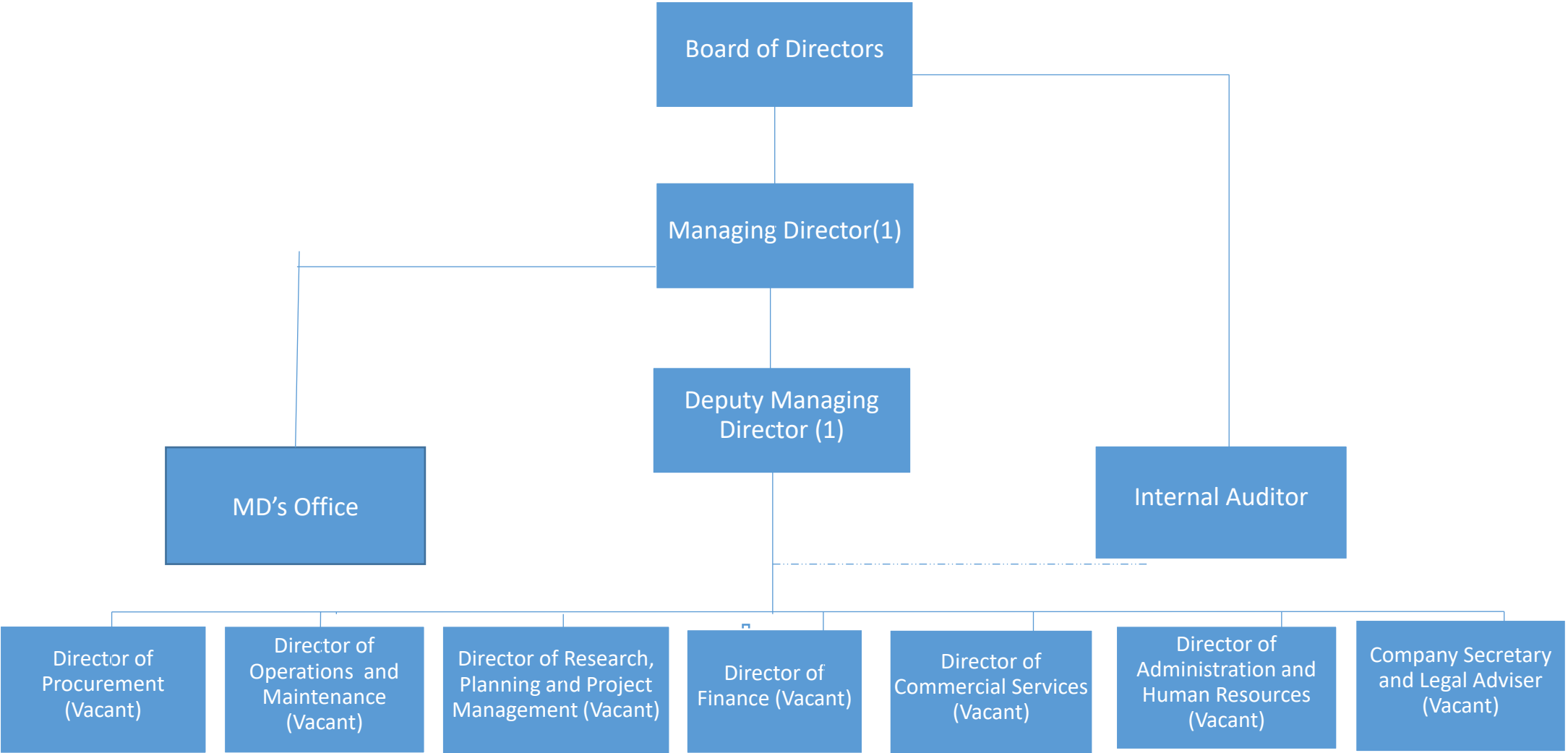
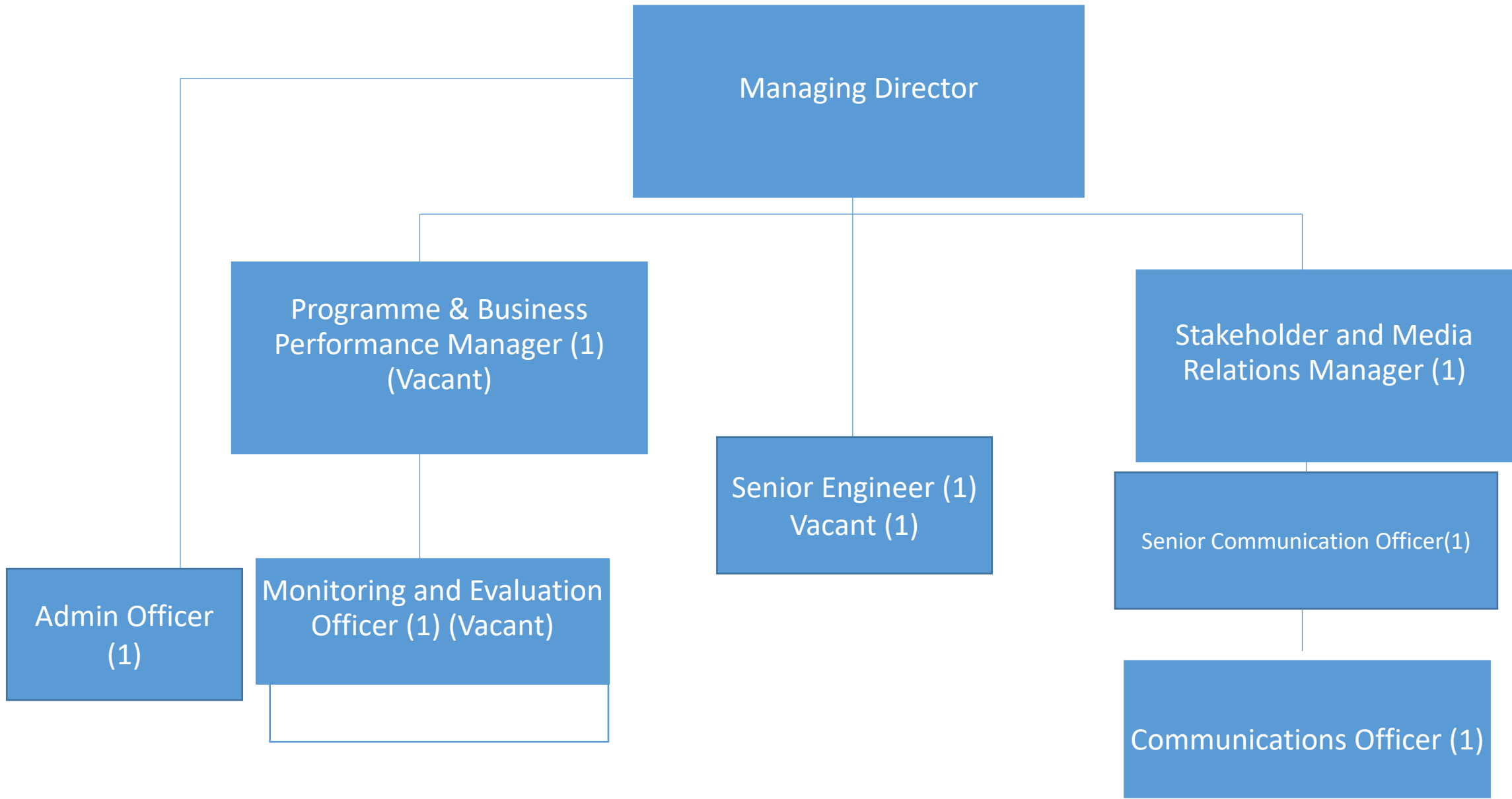


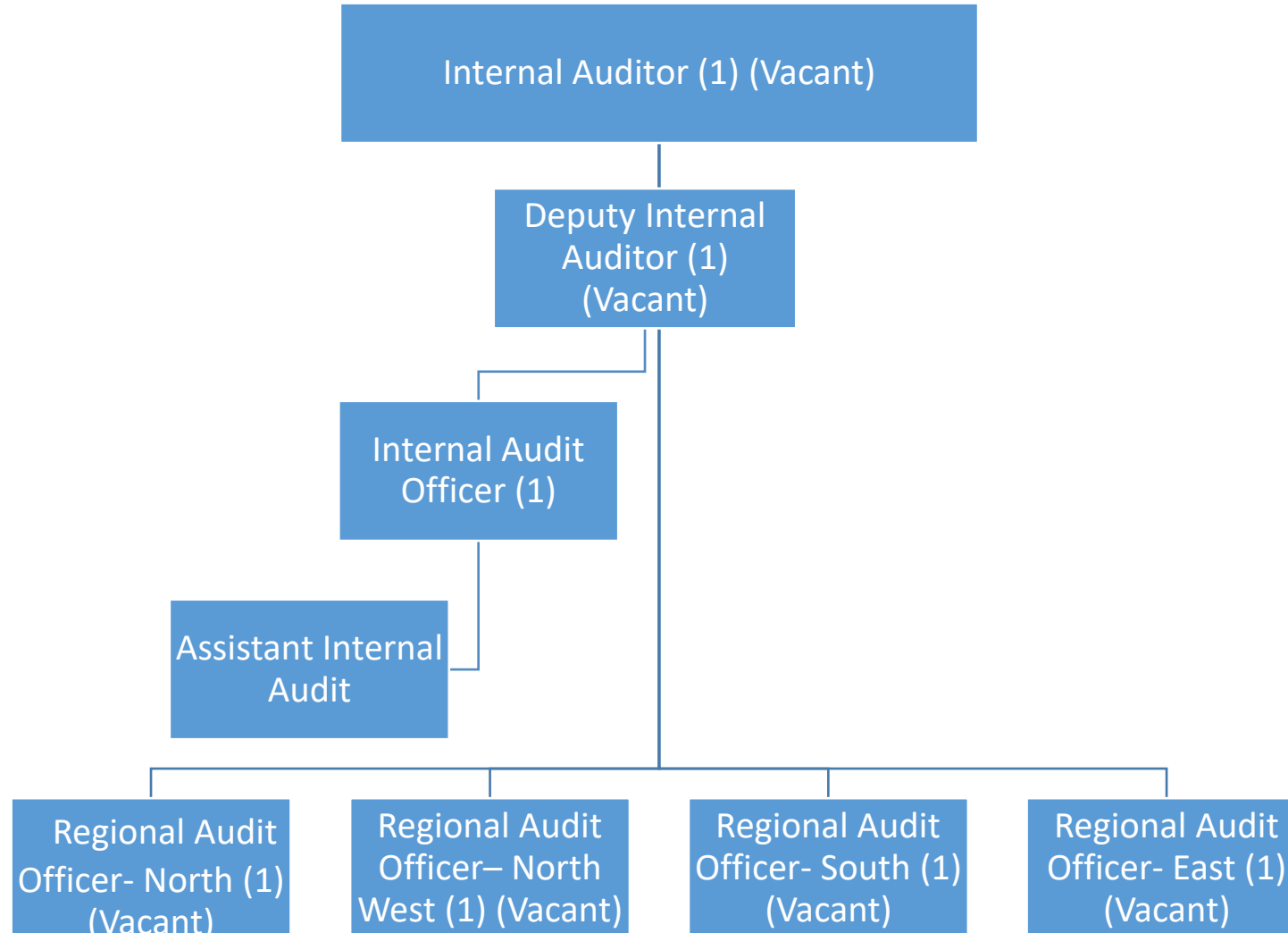
# SALWACO ORGANIZATIONAL STRUCTURE



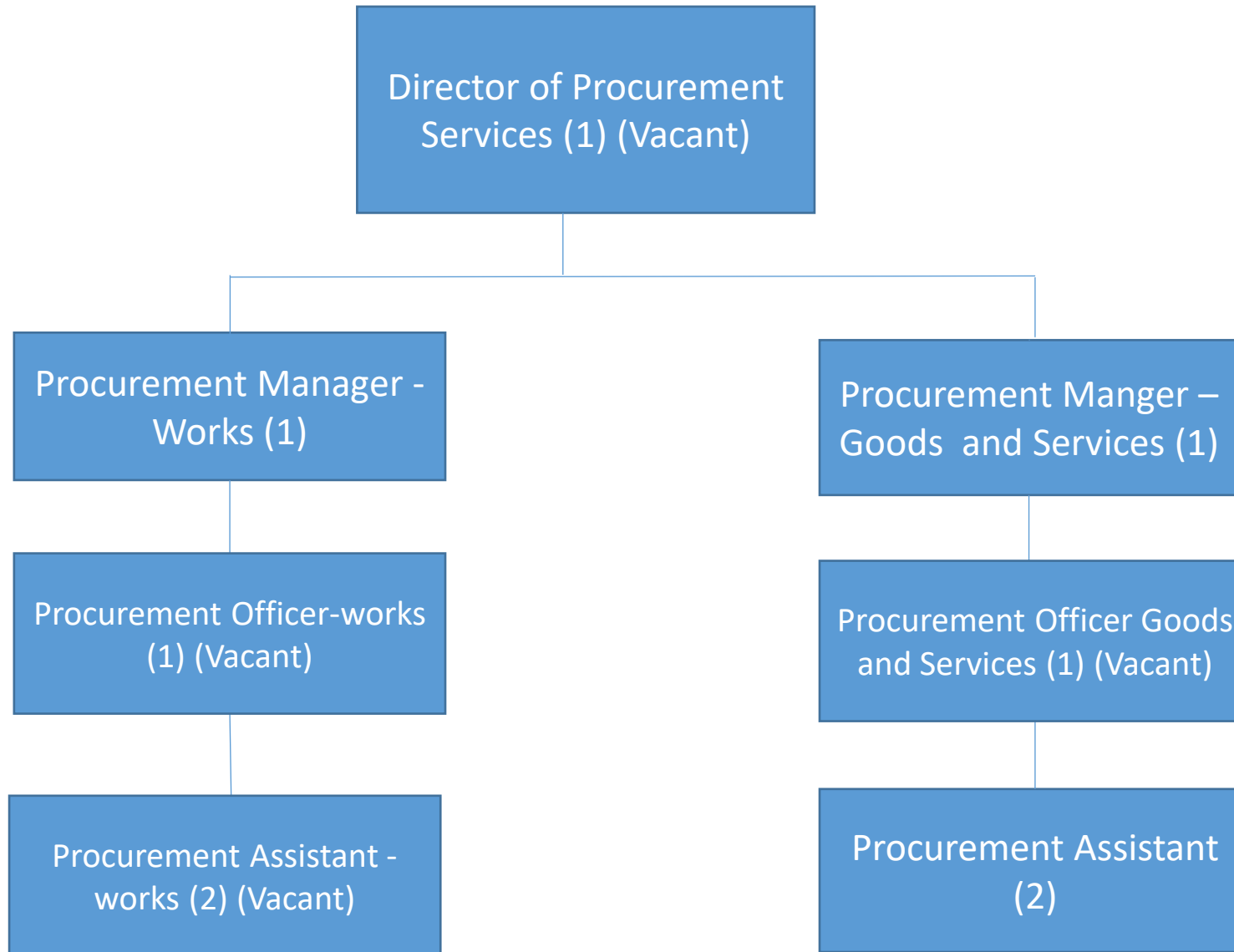
# MD'S SUPPORT OFFICE



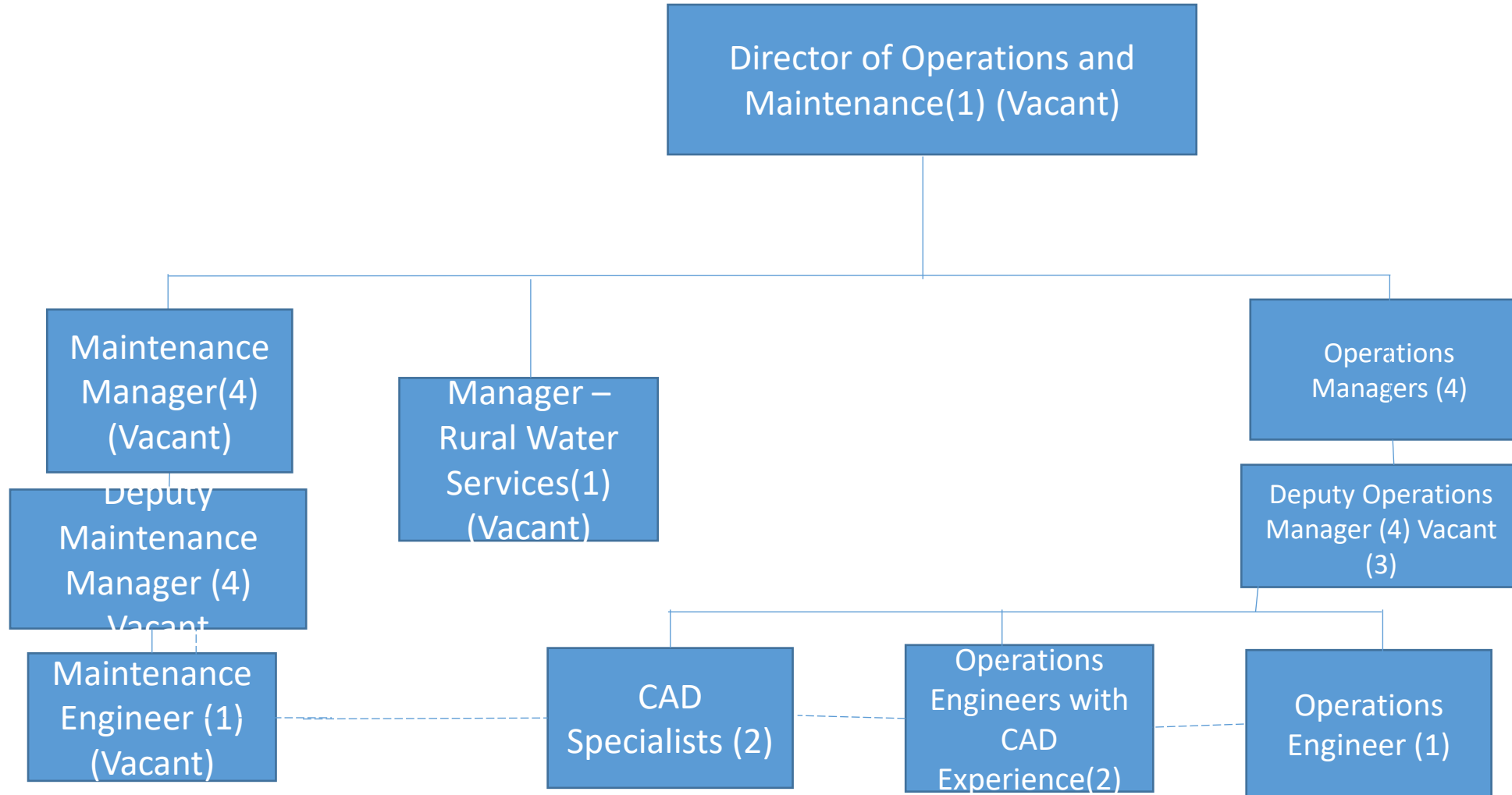
# INTERNAL AUDIT UNIT



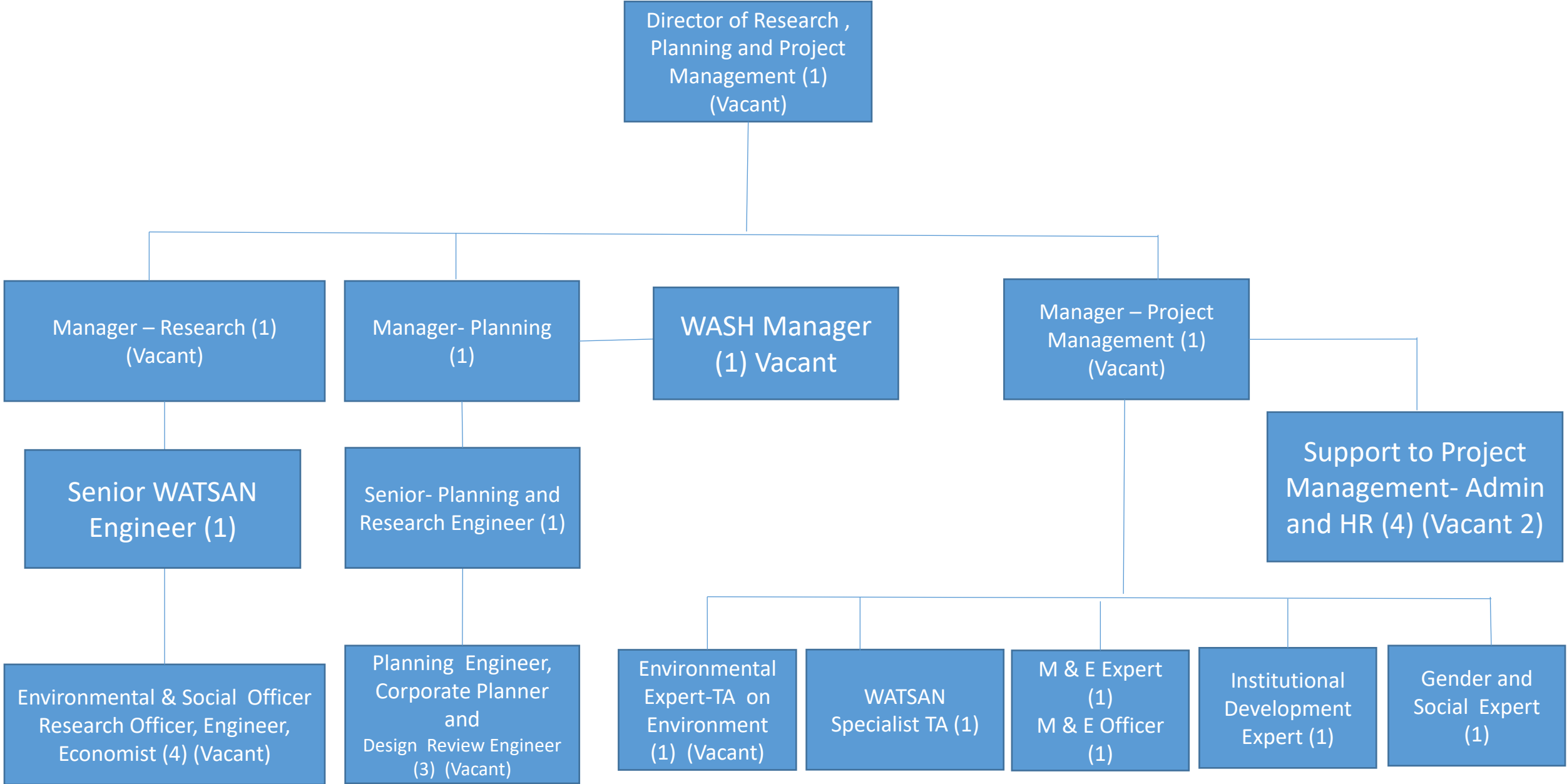
# DEPARTMENT OF PROCUREMENT



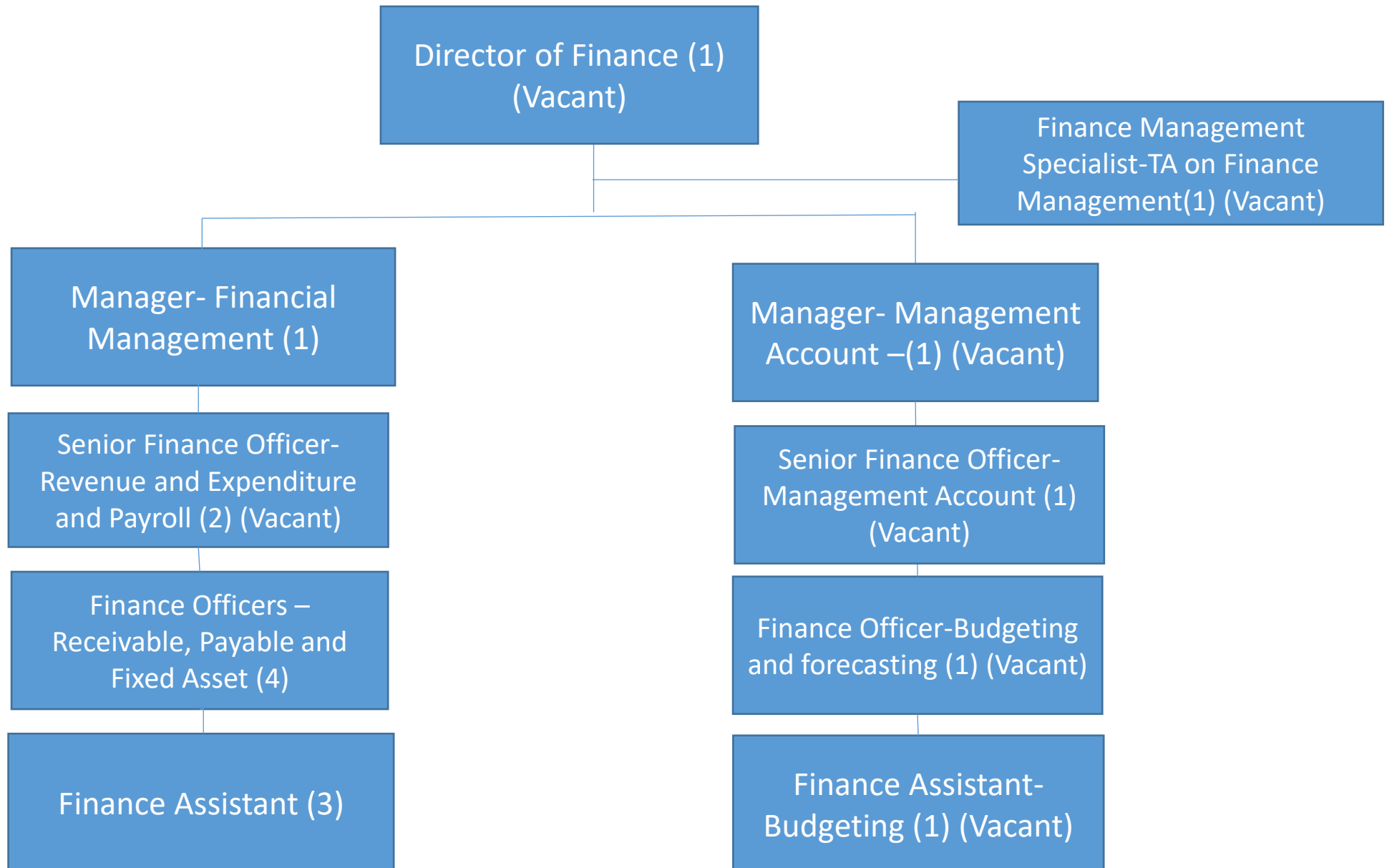
# DEPARTMENT OF OPERATIONS AND MENTAINANCE



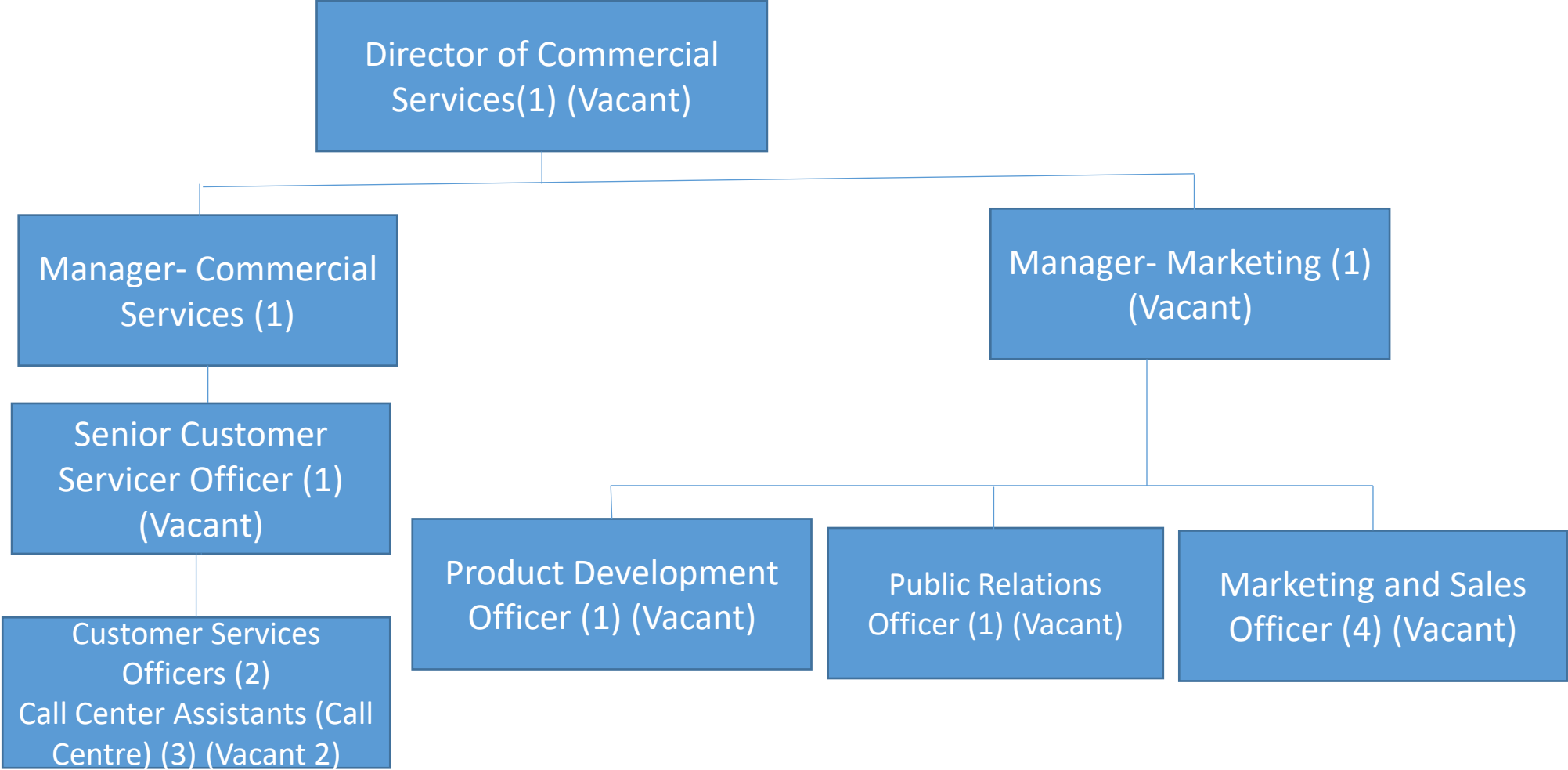
# DEPARTMENT OF RESEARCH, PLANNING AND PROJECT MANAGEMENT



# DEPARTMENT OF FINANCE



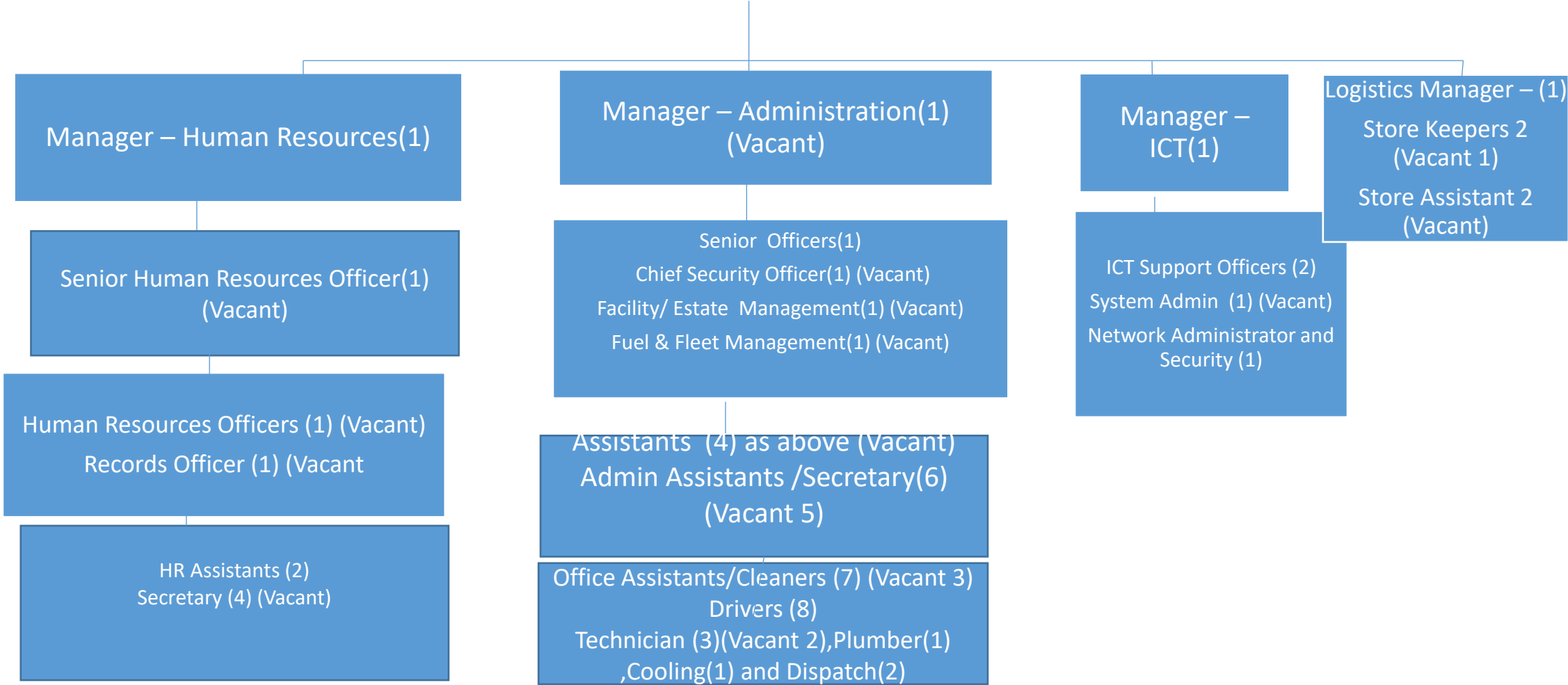
# DEPARTMENT OF COMMERCIAL SERVICES



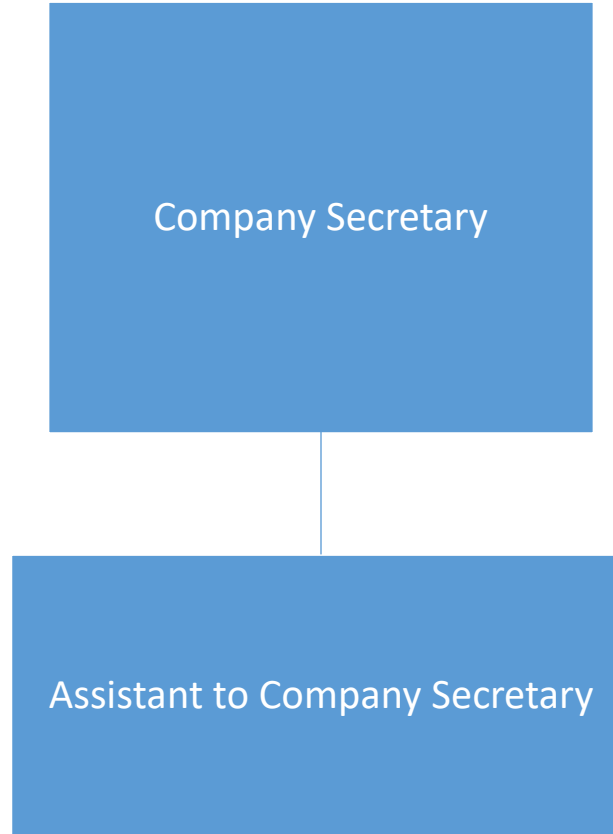


# DEPARTMENT OF ADMINISTRATION

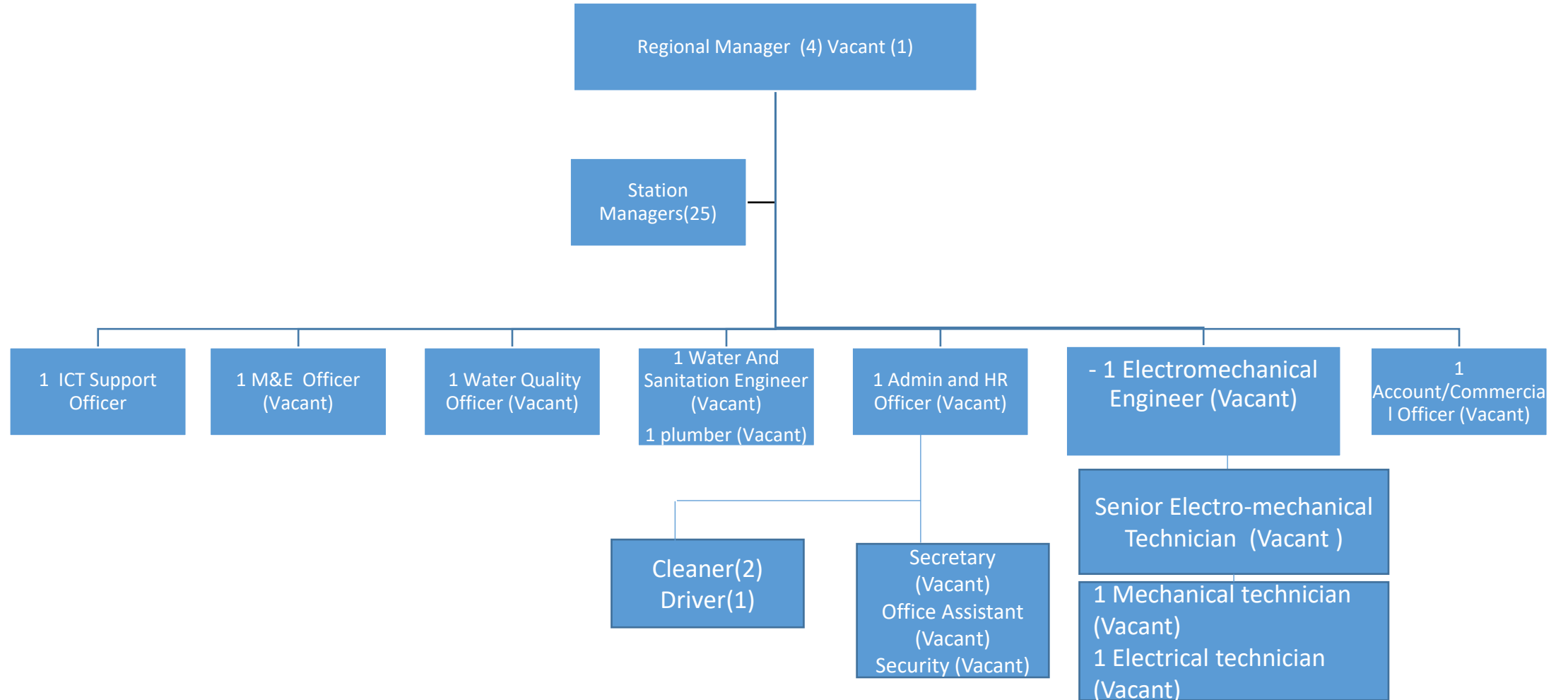
Director of Administration and Human Resources (1)



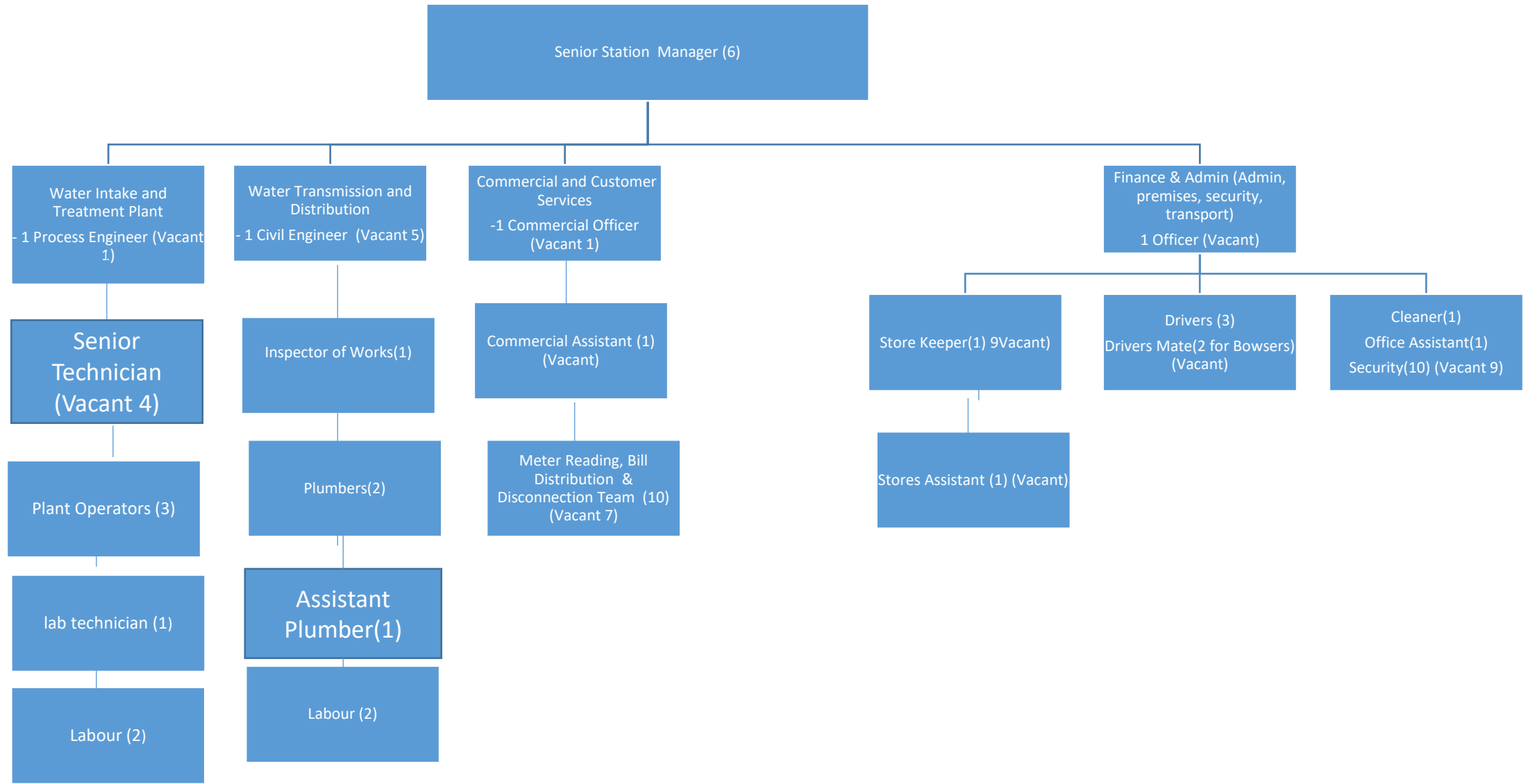
# COMPANY SECRETARY



# REGIONS



# STATIONS (Bo, Kenema, Makeni, Bonthe, Koidu New Sembehun, Lungi)



# STATIONS (All other Stations)

